

Mosaic 1100 *powered by Ligos software*

PRODUCT OVERVIEW

The Vector Data Mosaic 1100 enables multichannel operators to offer video-rich, next-generation guide channels for any generation of video content on any platform. Powered by Ligos' Mosaic software, the Vector Data Mosaic 1100 is a cost-saving, central office/headend-based enhancement to the existing Interactive Program Guide.

Using a tiled "video montage" layout, the Mosaic 1100 navigation displays up to a dozen or more thumbnails of high-quality live video streams on a single screen. The viewer uses the arrow buttons on their remote control to navigate and highlight individual tiles and listen to accompanying audio, and can directly tune to a specific channel if something captures their interest.

A single Mosaic 1100 replaces a rack full of central office/headend equipment that might otherwise be required to generate a single video rich channel. The Mosaic 1100 solution is compatible with a wide variety of industry EPG middleware solutions including Rovi Corporation's i-Guide™, Passport, Microsoft, SARA, MDN 3.0 and EBIF. As a result, the Mosaic 1100 is a widely-deployed solution worldwide for enhanced guides of this nature. This advanced video-processing software utilizes Gigabit Ethernet (GbE) interfaces for input, output, and management, and easily integrates into today's multichannel architectures.

The software consolidates all of the required functions – input, decoding, re-scaling, compositing, navigation metadata generation, channel mapping, encoding, multiplexing, integrated carousel and output – into a single, compact platform that can be managed online in real-time, either locally or remotely. Also available is Fail-Safe Supervisor, a network-based failover monitoring and control system specifically for multiple Mosaic 1100 installations.

The Mosaic 1100 also introduces additional revenue streams for our broadcast, cable, satellite and telco customers. Subscribers spend up to 10% of their viewing time within the program guide, so there are few better opportunities for advertising and promotion than when the viewer is in discovery mode.



Key Highlights

- Create audience-specific video portals for News, Sports, Children's, Movie and Local programming
- Ideal for key line-up differentiators such as weather and traffic cam channels or "event" television
- Attain new revenues by incorporating interactive advertising, promotions for services such as triple-play, VOD and PPV portals & more
- Integrated Channel Map tool makes set-up a breeze
- Flexible templates and broad support for graphics enable unique look & feel, and custom branding
- XML-based architecture supports integration with other systems, and includes an external utility for scheduling and serving dynamic content, including scheduled ads – make your Mosaic 1100 do more

INPUT

Interface	IEEE 802.3ab Gigabit Ethernet and local file input
Protocol	UDP Multicast
Stream	SPTS or MPTS MPEG-2 Transport Streams via UDP
Video	SD & HD MPEG-2 and H.264
Format	NTSC
Audio	MPEG Layer II or Dolby Digital AC-3
Data	Middleware specific data
Background	Motion video or still image
Graphic Formats	24 or 32-bit bitmaps w/alpha support

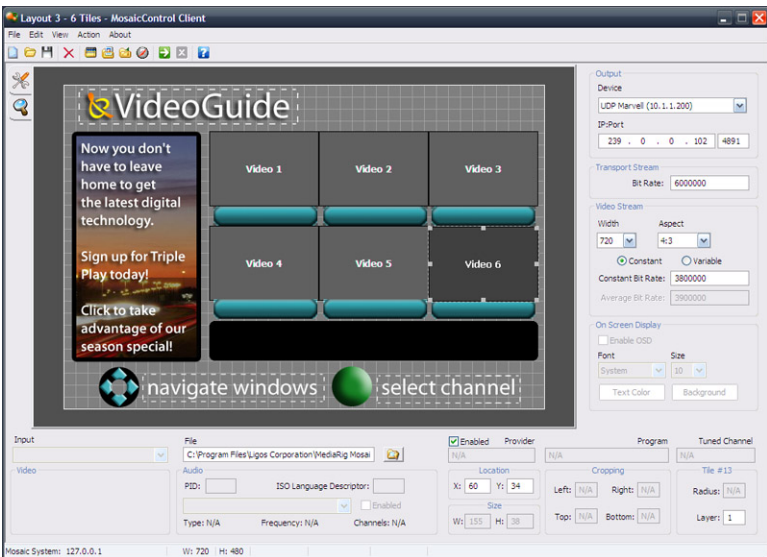
OUTPUT

Interface	IEEE 802.3ab Gigabit Ethernet and file output
Protocol	UDP Multicast or Unicast IP
Stream	MPEG-2 via UDP
Video	SD & HD MPEG-2 and H.264
Format	NTSC
Bit Rate	Based on target network and platform
Audio	MPEG Layer II or Dolby Digital pass-through or re-encode
Data	Program tables, channel map and XML navigation metadata

CONTROL & PROCESSING FEATURES

- Real-time, visual user interface simplifies the creation of dynamic Mosaic layouts, which can be saved and recalled
- Direct configuration via keyboard and mouse on local system, or remote operation over Ethernet
- Protocol – Client/Server Operation Using RPC over TCP/IP
- XML API with documentation and sample, used to control and configure the Mosaic server and content
- Integrated Channel Map utility, with support for multiple Mosaic systems utilizing a single map over a network
- Multiple input channels (video and audio) converted to navigable tiles, composited with associated graphical assets over a motion video or still image background
- Integrated layout templates for i-Guide™ IPG “VRN” option (versions A.24x and beyond) available; also compatible with middleware based on Passport, Microsoft, SARA, MDN 3.0 and EBIF
- Also available: Mosaic Fail-Safe Supervisor, a network-based failover monitoring and control system specifically for multiple Mosaic 1100 installations; monitors the Mosaic 1100 network, and can be configured to rollover to a redundant system should a problem be detected

Mosaic 1100 Client User Interface



The Mosaic 1100 client user interface provides the operator a straightforward way to produce engaging layouts that include video, still graphics, text and navigation elements as layered objects positioned over branded backgrounds (still or motion) of their own creation. Tile contents can be dynamically changed and keyed on/off as-needed and layouts and assets can be saved and recalled for future use. The integrated Channel Map utility and XML-based architecture makes mosaic configuration portable, easy to use and ideal for integration into external control systems.

PHYSICAL SPECIFICATIONS

Form Factor	1U Rackmount
Redundant Power	Optional
Power Options	AC or DC
<i>*NEBS Level 3 Compliant Systems are also available.</i>	

For more information about the Mosaic 1100 or any other Vector Data products, please contact us at sales@vectordata.com.

Ligos® and Mosaic™ are trademarks of Ligos Corporation. i-Guide is a trademark of Rovi Corporation. Windows is a trademark of Microsoft Corporation. All other trademarks, product names, and/or trade names are used solely for the purpose of identification and belong to their respective holders. All system and application specifications are subject to change without notice.

Copyright © 2011 Vector Data LLC.